



Think Green:
SACMI at NPE in Orlando

—

HOW ARTIFICIAL
INTELLIGENCE WILL
REVOLUTIONIZE
QUALITY CONTROL

Ankur Boruah

Rigid Packaging Technologies

SACMI

SACMI is a leading provider of machines and complete plants for the ceramics, packaging and beverage industries worldwide.



SACMI in figures

QUALITY OF BUSINESS, QUALITY OF LIFE



We are where you are

Our network speaks our customers' language.



70 companies

in 26 countries, 24 of them
manufacturers

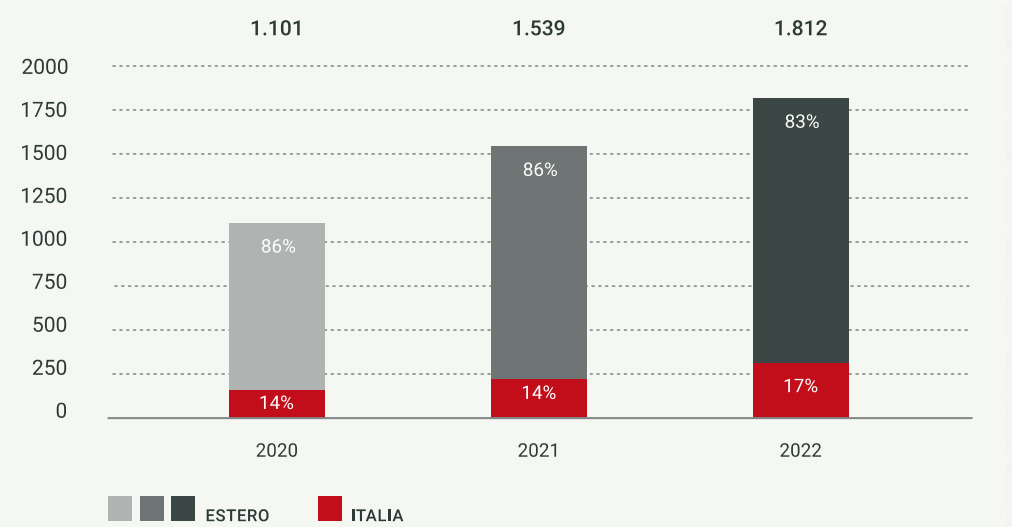
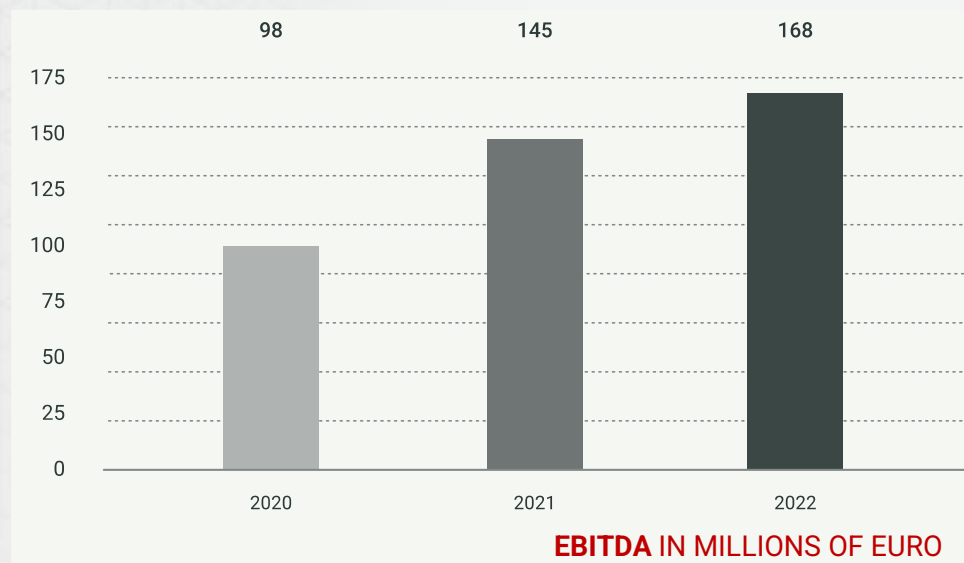
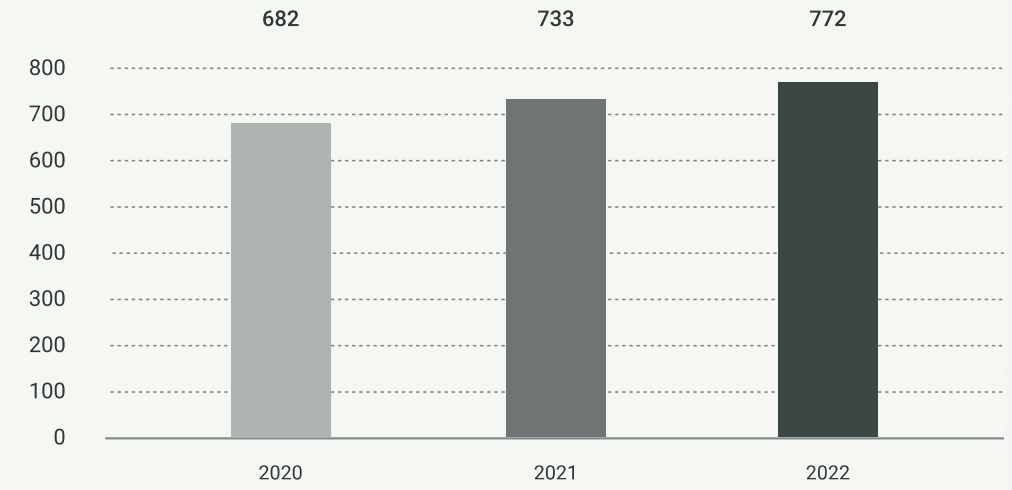
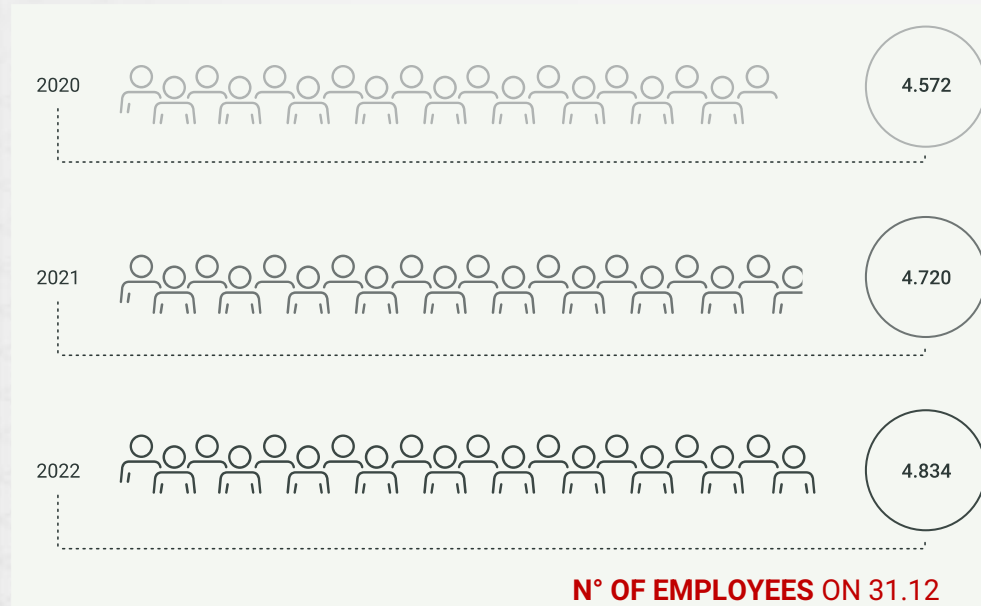


Brand and logo
recognized
and registered in
more than

100

countries.

Economic sustainability 2022



Environmental performance

6 CLEAN WATER AND SANITATION



-34%

water treated by the SACMI Imola purifier compared to the previous 4-year average

12 RESPONSIBLE CONSUMPTION AND PRODUCTION



- 7%

total waste generated compared to 2021 (-23% hazardous waste)

83%

of waste sent on for recovery and recycling

7 AFFORDABLE AND CLEAN ENERGY



-7%

total emissions (tons of CO₂) compared to 2021

+ 8%

self-generated electricity (trigeneration and photovoltaic)

- 10%

gas consumption

2 MW

of photovoltaic panels installed

Innovation & research

100

**ACTIVE
PARTNERSHIPS**

with **Universities** and
research bodies on
strategic projects

150

**MILLION EUROS OF
INVESTMENT**

in the last 3 years

147

R&D PROJECTS
assigned

4,709

**PATENTS
REGISTERED**
since the Group's founding

300

**HIGHLY QUALIFIED
TECHNICIANS**

employed in the Imola
Research Center

Our businesses

A SOLE PARTNER, FROM CONCEPT TO TECHNOLOGY,
PRODUCTS AND SERVICES



TILES

Revenues: 860 million
Employees: 1,800



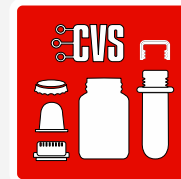
WHITEWARE

Revenues: 100 million
Employees: 350



ADVANCED

Revenues: 230 million
Employees: 450



RIGID PACKAGING

Revenues: 270 million
Employees: 700



BEVERAGE

Revenues: 130 million
Employees: 500



PACKAGING & CHOCOLATE

SACMI: TOWARDS THE FACTORY OF THE FUTURE

**Our Vision:
Sustainability,
Innovation, and
Human Empowerment**

**Our mission:
To collaborate with
customers to improve
productivity and efficiency
while fostering
competitiveness and
innovation.**

The Factory of the Future

The factory of the future is based on three fundamental pillars: efficiency, responsibility and humanity.

- **Efficiency:**

Use of advanced technologies to optimize the production process.

- **Responsibility:**

Commitment for eco-friendly solutions, reducing environmental impact.

- **Humanity:**

Prioritizing worker well-being and safety through AI-enhanced technologies.

Sacmi's Commitment to Technological Innovation:

Implementation of advanced technologies for Efficiency and Operator Facilitation

- Implementation of advanced technologies to improve efficiency and productivity.
- Sacmi integrates Computer Vision, IoT, Digital Twin, AI, Big Data and Smart Energy technologies.
- Emphasis on simplifying operator tasks and improving the user experience.
- Launch of new AI-powered products focused on improving the user experience.



Our Visionary Transformation



Digital Transformation

based on deep learning and artificial intelligence techniques.

Beyond Specific Products

a shift in mindset and a new perspective in the development of our devices.

The logo for CVS system features the letters 'CVS' in a large, bold, white font. To the left of 'CVS' are three white circles connected by lines, resembling a circuit or network diagram. To the right of 'CVS' is the word 'system' in a smaller, lowercase, white font. Above 'system' is the text 'COMPUTER VISION' in a smaller, uppercase, white font. The entire logo is set against a blue background that is part of a larger blue rounded rectangle.

COMPUTER VISION
CVSsystem

Vision isn't just a matter of eyes,
It's also about intelligent machines!

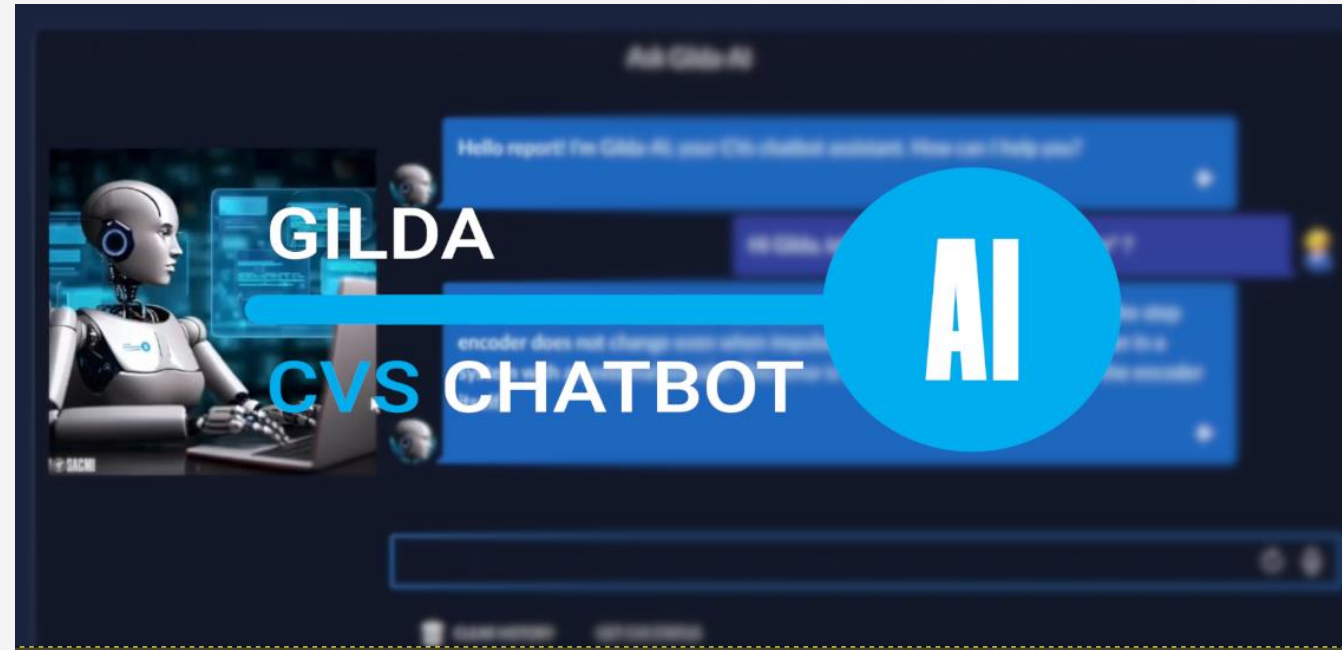
*The CVS brand embodies the essence of our
innovation and represents our commitment to
quality and reliability.*

Next-Generation Smart Features: Classy-AI and Gilda-AI

- designed on customer's needs
- result of intense R&D on AI



- Classy-AI revolutionizes defect classification in production.



- Gilda-AI redefines human-machine interaction.

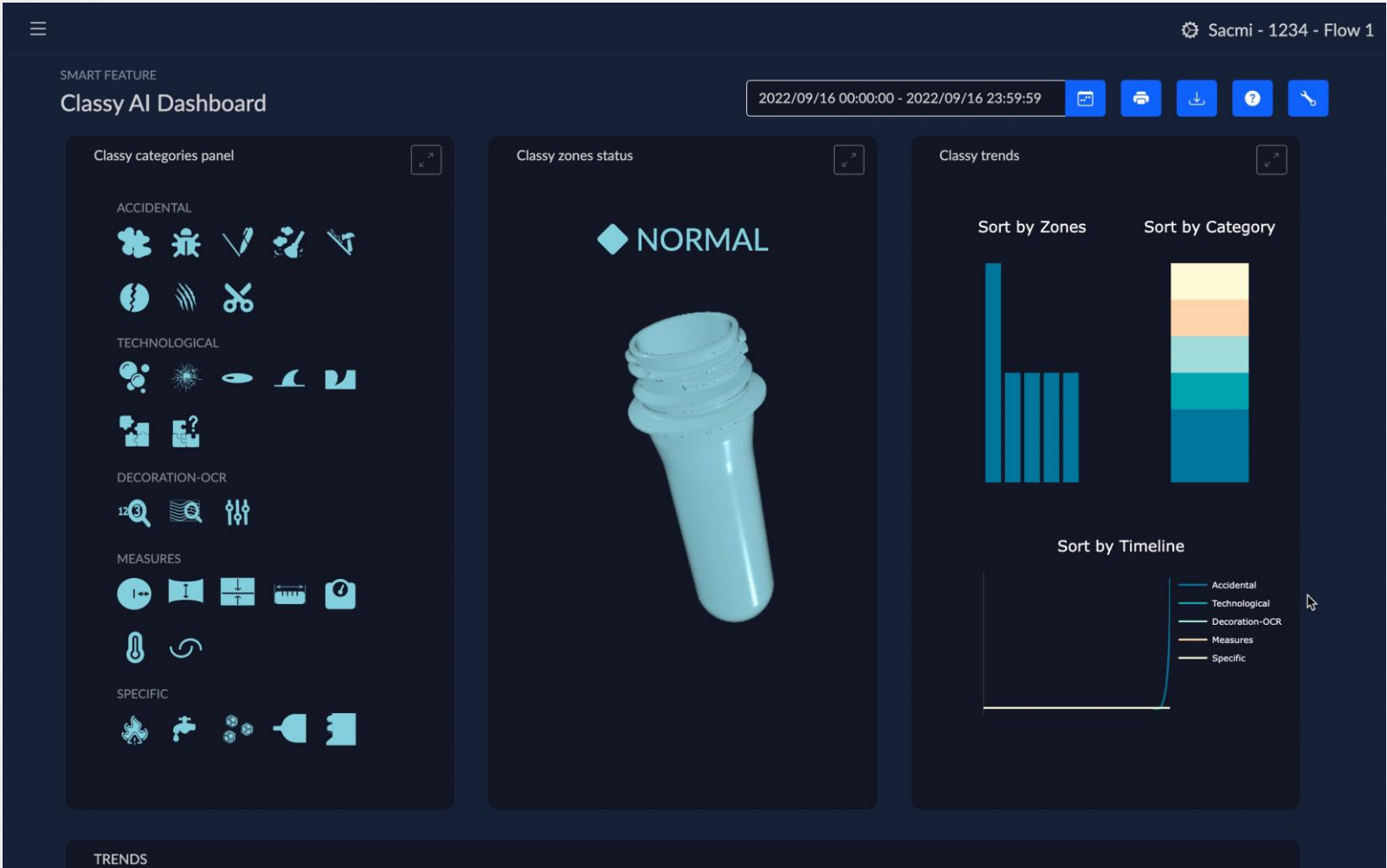
Classy-AI: Automated Defect Classification



- Introduction of Classy-AI for defect detection in cap production.
- Elimination of manual defect inspection through AI technology.
- Simplified interface with defect indication system.

Classy-AI: Automated Defect Classification

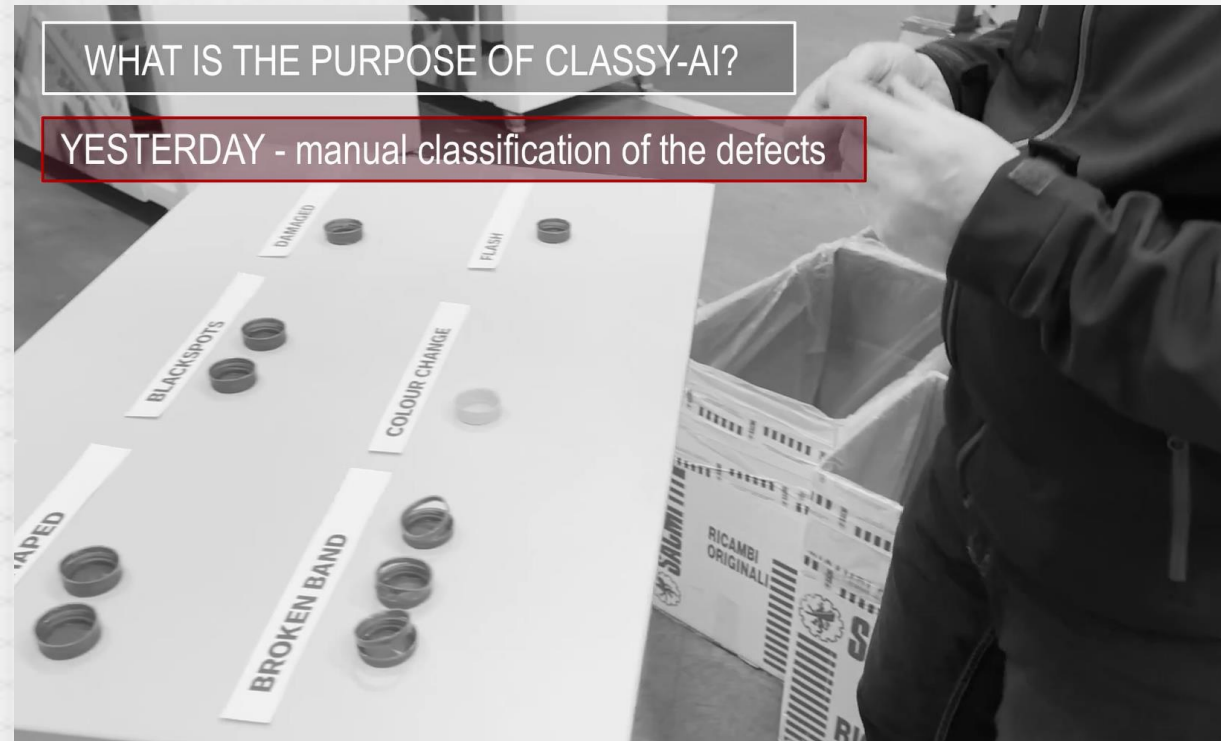
Simplified interface with defect indication system



Classy-AI: Revolutionizing Work Processes

WHAT IS THE PURPOSE OF CLASSY-AI?

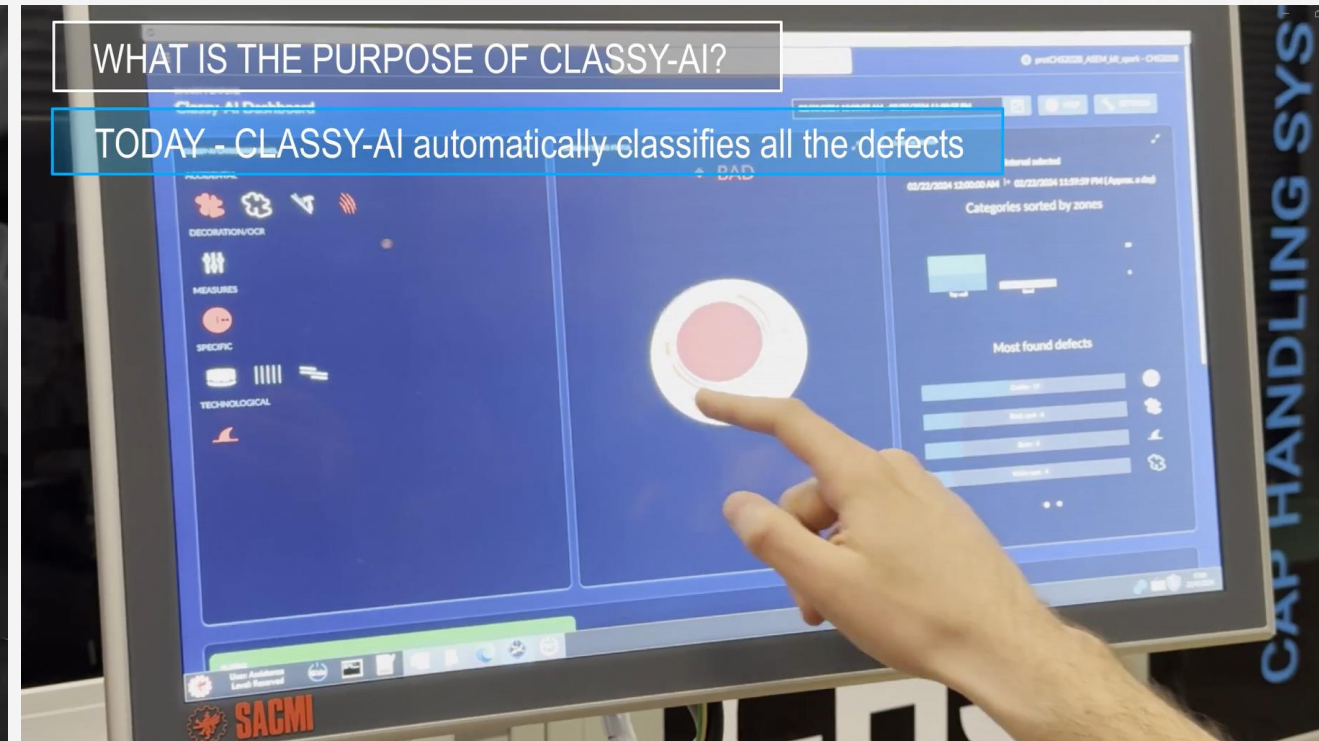
YESTERDAY - manual classification of the defects



- Past Challenges: Manual Inspection, Interpretation Variations.

WHAT IS THE PURPOSE OF CLASSY-AI?

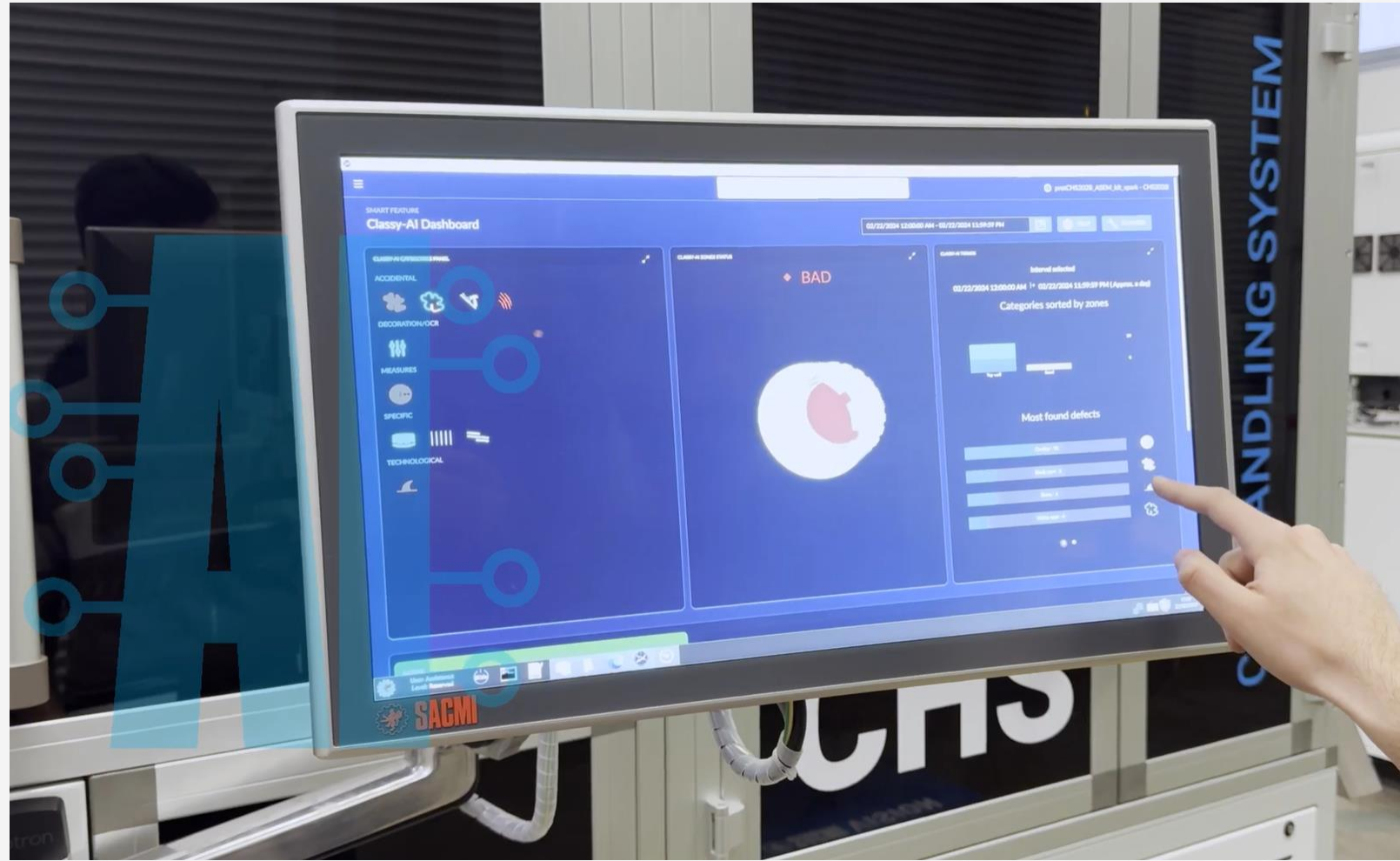
TODAY - CLASSY-AI automatically classifies all the defects



- Our solutions: Automated defect recognition, standardized classification.

Benefits of Classy-AI

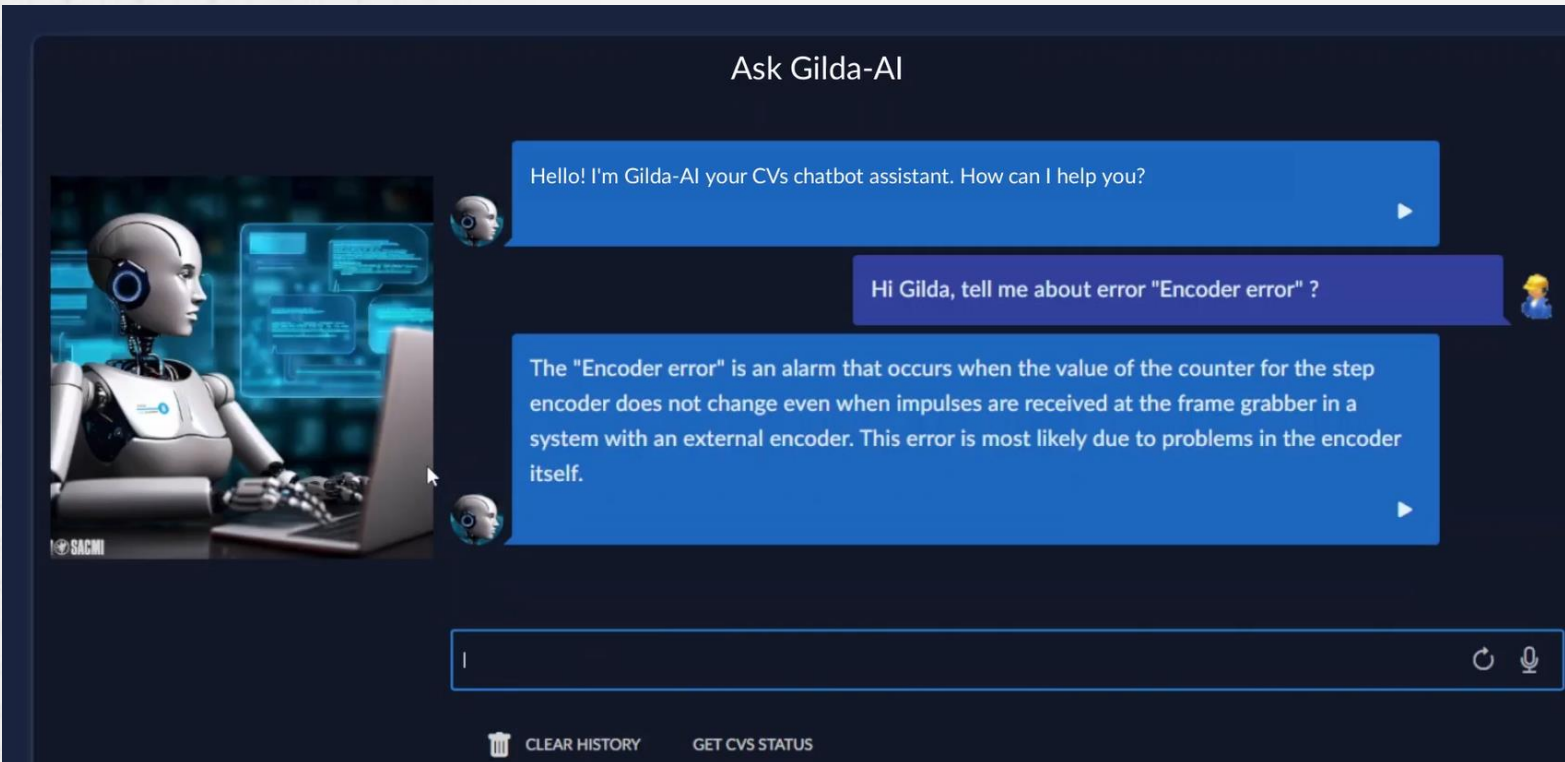
- Time-saving: Operators can focus on other tasks.
- Detailed, quality information helps maintain high standards.
- Increased efficiency in the production of caps.



Meet Gilda-AI: Your CVS CHATBOT ASSISTANT

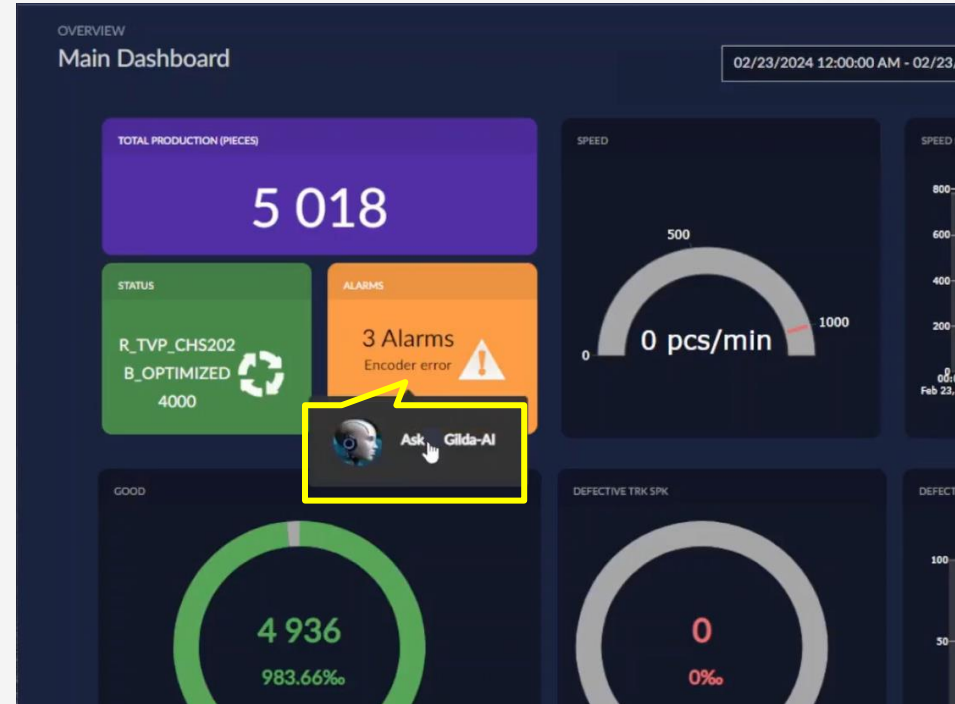
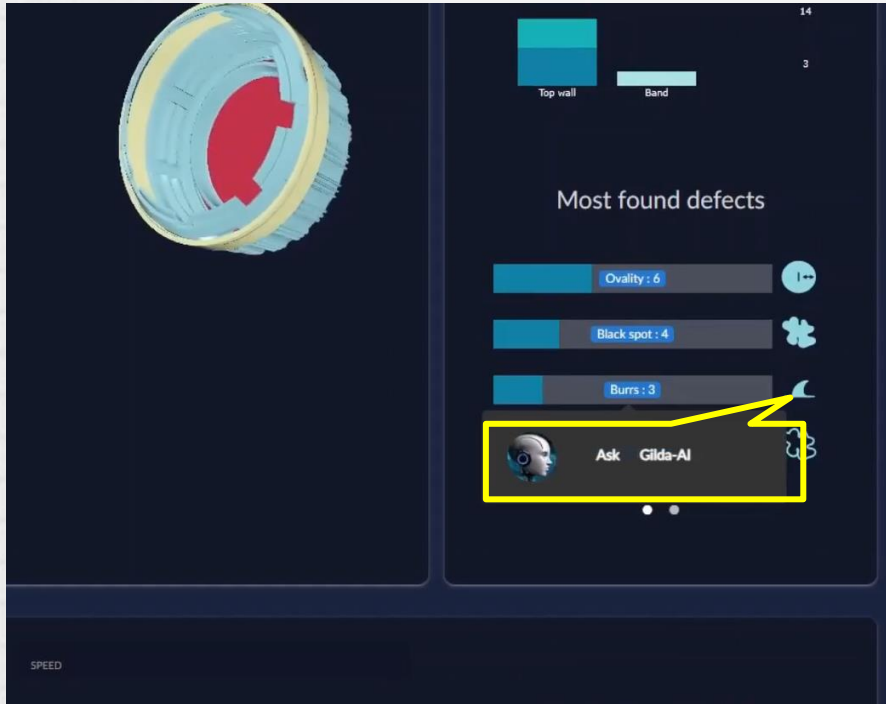
Gilda-AI: Redefining Human-Machine Interaction

- Immediate assistance in the case of breakdowns 24//h
- Operation using natural language, improving accessibility
- The human-like voice interface improves user experience and efficiency.



Gilda-AI Integration with CVS: Keeping Things Simple

Classy AI Problem Solving Scenario Using Gilda-AI! CVsWEB Problem Solving Scenario Using Gilda-AI!



- Integration with Classy-AI and CVsWEB enhances Gilda-AI's functionality and support capabilities.
- Gilda-AI provides prompt assistance on icons, error messages, graphics, and other elements within these applications.

COMPUTER VISION CVS system





Conclusions

- SACMI:
Leading the way to the Factory of the Future.
- The past is gone:
Embracing a digital future for a sustainable,
innovative and human-centric industry.



SACMI

Thank you for your attention